

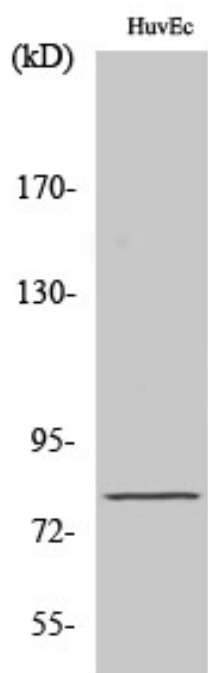


# NOL10 Polyclonal Antibody

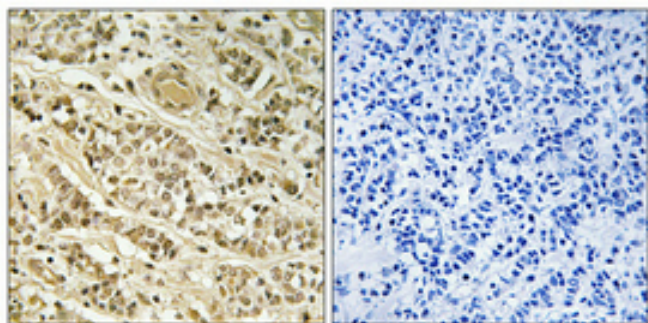
<b>Catalog No</b>	YP-Ab-00463
<b>Isotype</b>	IgG
<b>Reactivity</b>	Human;Rat;Mouse;
<b>Applications</b>	WB;IHC;IF;ELISA
<b>Gene Name</b>	NOL10
<b>Protein Name</b>	Nucleolar protein 10
<b>Immunogen</b>	The antiserum was produced against synthesized peptide derived from human NOL10. AA range:639-688
<b>Specificity</b>	NOL10 Polyclonal Antibody detects endogenous levels of NOL10 protein.
<b>Formulation</b>	Liquid in PBS containing 50% glycerol, 0.5% BSA and 0.02% sodium azide.
<b>Source</b>	Polyclonal, Rabbit,IgG
<b>Purification</b>	The antibody was affinity-purified from rabbit antiserum by affinity-chromatography using epitope-specific immunogen.
<b>Dilution</b>	WB: 1/500 - 1/2000. IHC: 1/100 - 1/300. ELISA: 1/40000.. IF 1:50-200
<b>Concentration</b>	1 mg/ml
<b>Purity</b>	≥90%
<b>Storage Stability</b>	-20°C/1 year
<b>Synonyms</b>	NOL10; Nucleolar protein 10
<b>Observed Band</b>	80kD
<b>Cell Pathway</b>	Nucleus, nucleolus .
<b>Tissue Specificity</b>	Embryo,Placenta,
<b>Function</b>	similarity:Belongs to the WD repeat NOL10/ENP2 family.,similarity:Contains 5 WD repeats.,
<b>Background</b>	similarity:Belongs to the WD repeat NOL10/ENP2 family.,similarity:Contains 5 WD repeats.,
<b>matters needing attention</b>	Avoid repeated freezing and thawing!
<b>Usage suggestions</b>	This product can be used in immunological reaction related experiments. For more information, please consult technical personnel.



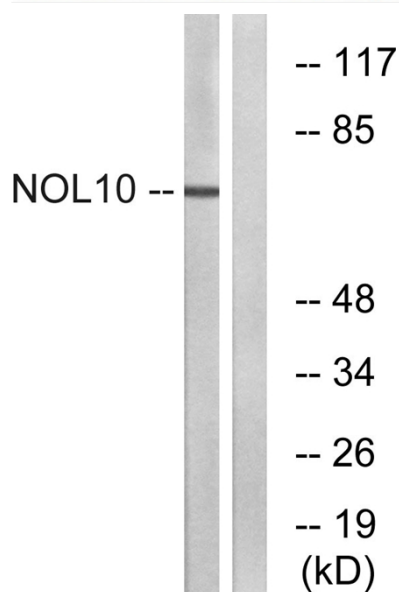
## Products Images



Western Blot analysis of various cells using NOL10 Polyclonal Antibody cells nucleus extracted by Minute TM Cytoplasmic and Nuclear Fractionation kit (SC-003, Inventbiotech, MN, USA).



Immunohistochemical analysis of paraffin-embedded Human breast cancer. Antibody was diluted at 1:100 (4° overnight). High-pressure and temperature Tris-EDTA, pH 8.0 was used for antigen retrieval. Negative control (right) obtained from antibody was pre-absorbed by immunogen peptide.



Western blot analysis of lysates from HUVEC cells, using NOL10 Antibody. The lane on the right is blocked with the synthesized peptide.